

District 1 On-Call Smart Work Zone Contract

Use

- District 1 Contract was set up to supplement the on call traffic control contract.
- Primarily used to warn motorists of lane closures for recurring bridge inspection projects.
- Can be used else where if needed.

Contract Items and Set Up

- Work Order Based
- Contact Contractor to mobilize the system. Has to respond and begin work within one week
- May be in place for up to 4 weeks
- A maximum of 2 systems may be deployed at one time

Pay Items

- 3 Pay Items
 - Call Out – Each
 - Smart Traffic Monitoring System – Cal Day
 - Changeable Message Sign – Cal Day

Pay Items

- Call Out – Each
 - Preparations and operations necessary for the movement of resources and incidentals to the site.

Pay Items

- Smart Traffic Monitoring System – Cal Day
 - Furnishing, Installing, maintaining, removing, and programming various components.
 - Consists of 4 Smart Traffic Monitoring Devices
 - Shall collect real-time vehicle data
 - Calculate the actual traffic backup delay time and distance within ½ mile to stopped or slowed traffic.
 - Shall be able to calculate travel times to major destinations

Pay Items

- Smart Traffic Monitoring System – Cal Day
 - May use the following vendors
 - ASTI
 - iCone
 - Street Smart
 - Ver-Mac

Pay Items

- Changeable Message Sign, Special – Cal Day
 - Typical Deployment includes 4 portable changeable message signs
 - Can add more signs if needed

WORK ORDER

DISTRICT 1 SMART TRAFFIC MONITORING SYSTEM

Sheet 1 of 2

WORK ORDER NO. 3 Date of Issue 3/7/2016 ROUTE WB I-80

LOCATION DESCRIPTION WB I-80 at Des Plaines River in Will County, IL

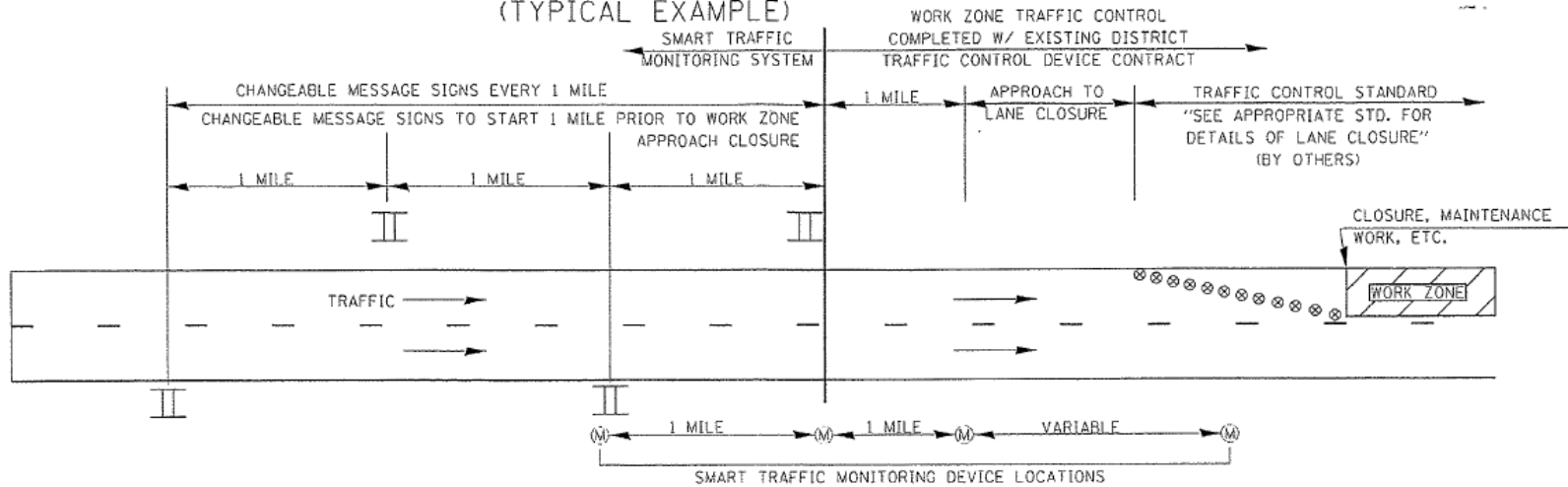
CONTRACT NO. 62A35 CLAIM NO.: _____

HIGHWAY LIGHTING CABLE PRESENT (YES) (NO) (N/A) _____ JOB NO. C-91-150-15

CODE NUMBER	DESCRIPTION	UNIT	QUANTITY	UNIT PRICE	ITEM COST
X7010237	CHANGE MESSAGE SN SPL	CAL DA	16.00	100.00	\$1,600.00
X8570001	SMART TRAF MONIT SYS	CAL DA	4.00	500.00	\$2,000.00
Z0008759	CALL OUT	EACH	1.00	19,366.66	\$19,366.66
TOTAL COST					\$22,966.66

Deployment

SMART TRAFFIC MONITORING SYSTEM (CALL-OUT) (TYPICAL EXAMPLE)



***NOTES:**

- ① ACTUAL LOCATION OF SMART MONITORING DEVICES SHALL BE BASED ON MANUFACTURER'S SPECIFICATIONS AND RECOMMENDATIONS ALONG WITH THE SPECIAL PROVISIONS AND AS DIRECTED BY THE ENGINEER.
- ② MODIFICATIONS MAY BE NECESSARY TO ACCOMODATE SPECIFIC CLOSURES. ALL CHANGES WILL BE APPROVED BY THE ENGINEER.

LEGEND

- II CHANGEABLE MESSAGE SIGN LOCATIONS
- M SMART TRAFFIC MONITORING DEVICE LOCATION
- ⊗ DRUM/BARRICADES PER APP. STANDARD (BY OTHERS)

2 recurring locations where it's deployed.

- I-80 over the Des Plaines River in Joliet
 - 2 separate cantilever truss bridges
 - 3 lanes in each direction
 - Yearly Inspection, 1 week per direction
- I-55 over the Des Plaines River in Channahon
 - 2 separate cantilever truss bridges
 - 2 lanes in each direction
 - Every other year inspection, 1 week per direction

Lessons Learned and Future Considerations

- It is recommend to:
 - Add provisions that require the vendor to install and test any software on IDOT computers within 1 month of contract execution
 - Provide greater flexibility by adding a pay item for individual sensors, if needed (similar to District 9)
 - Specify a required timeline for each of the work orders (issuance, system in place and functional, etc.)

Lessons Learned and Future Considerations (Cont.)

- Provide clarification on how IDOT would pay for deployments that exceed 1 week, but less than 1 month
- Include an additional statement under “Cooperation Between Contractors” to avoid potential conflicts when deploying on-call systems on other contractor-performed projects
- Provide quantity for CCTV Cameras
- Provide clarification on how to handle relocation of systems / devices under a single work order (payment or incidental)

Matt Daeda, P.E.

IDOT District 1 Bureau of Traffic Operations

Expressway Traffic Operations Engineer

Matthew.Daeda@illinois.gov

(847) 705-4157

QUESTIONS?