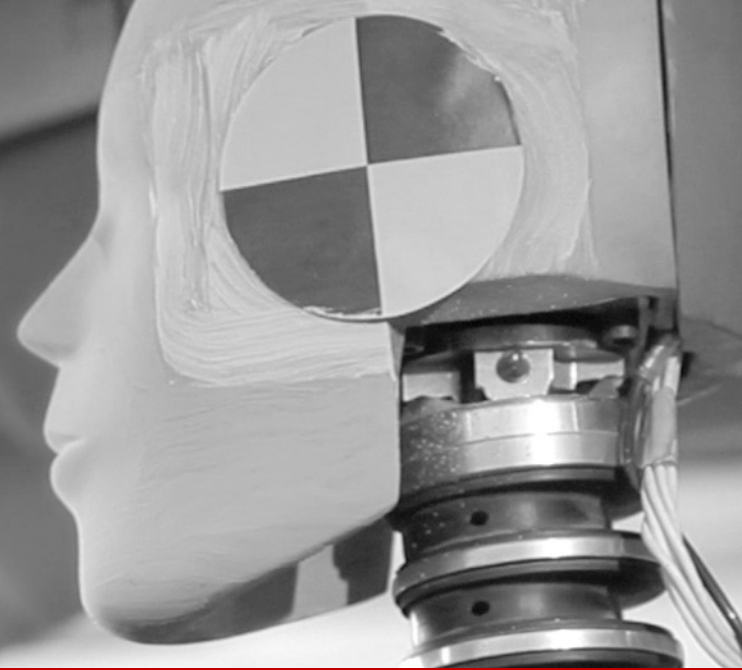


National Highway Traffic Safety Administration



64th Annual Traffic Engineering &
Safety Conference

Thursday, October 15, 2015.



Driver Education Technical Assessments

Michelle Atwell

Enforcement and Justice Services

NHTSA, USDOT

NHTSA Mission

NHTSA's mission is to reduce deaths, injuries and economic losses resulting from motor vehicle crashes, through education and outreach, research, technology advancement, safety standards and enforcement activity.

NHTSA is the States leading voice and source of information relating to Automotive and Highway Safety.

Teen Crashes

Motor vehicle crashes are the leading cause of death for 15- to 20-year-olds

Priority Program Areas

- Access to Alcohol
 - Target: adults, youth and vendors
- Graduated Driver Licensing (GDL)
 - Enforcement, education & outreach and parental involvement
 - *State Technical Assessment Program*
- Seat Belt Use
 - Education & outreach and enforcement

NHTSA Support & Current Efforts

- Coordination with NHTSA Regions & SHSOs
- Partnerships with external stakeholders to provide supplemental support, training, resources & technical assistance
- Formation of stakeholder groups: The Association of National Stakeholders in Traffic Safety Education (ANSTSE)
 - Implementation & maintenance→
 - » Novice Teen Driver Education & Training Administrative Standards (NTDETAS)
 - » Model curriculum (ADTSEA & NHTSA)
- *State DE Program Technical Assessments (NTDETAS)*

Benefits to Driver Education Technical Assessment

- Independent evaluation of State DE Program
 - Identify program strengths, accomplishments & areas of improvement
 - NTDETAS
- Strategic plan/road map
- Program enhancement
- Relationship building & management
- Support for future State TA

NHTSA DE Assessments

- Maryland
- Oregon
- Delaware
- Michigan
 - Idaho
 - Kansas
 - Vermont
- North Dakota
- Illinois (April 2015)
- North Carolina

Technical Assessment Process

- State request to RO
- Technical assistance (pre/post)
 - RO to NHTSA Headquarters
- Coordination & planning begins
- Technical Assessment (on-site)
 - Final report
- Future technical assistance

Technical Assessment Areas of Focus

1. Program Administration
2. Education/Training
3. Instructor Qualifications
4. Parental Involvement
5. Coordination with Driver Licensing

*(*Novice Teen Driver Education & Training Administrative Standards (NTDETAS))*

Illinois Top Priority Recommendations

1.1.1

- **Establish a formal, representative and ongoing Advisory Board that provides input to both the ISBE and SOS on the implementation, monitoring, evaluation and enforcement of the State's driver education programs. The Advisory Board should include members from the principal stakeholders from all regions of the State.**

1.1.4

- **Require all public driver education programs and commercial driver training schools to use state-approved driver education curricula with written goals and objectives.**

3.1.2

- **IBSE and SOS should ensure instructors complete approved standardized instructor training that applies to instructors and teachers in all public driver education and commercial driver training schools. This preparation should include a course of study that is no less than 120 clock hours of preparatory time.**

Illinois Priority Recommendations

4.1.1

- **Require all parent/legal guardians to attend a parent night, pre-course session or the initial session of the teen's driver education and training course. Consider developing or establishing alternative methods or procedures for parent/legal guardians who are not able to attend the parent night, pre-course session or the initial session of the driver education and training course.**

4.1.2

- **Require all public and commercial schools to hold and all parents to complete (in some form) an end-of-course debriefing session with their teen's driver education instructors(s).**

5.1.1

- **Establish a formal system of regular communication/meetings between applicable state agencies dealing with driver education/training and licensing.**

Next Steps...

- Future planning for State DE/Young Driver program
 - Identify program strengths, accomplishments & areas of improvement for program enhancement
- State technical assistance → pre/ post assessment
 - Post Technical Assistance Example →
 - 1.1.1
 - Establish a formal, representative and ongoing Advisory Board that provides input to both the ISBE and SOS on the implementation, monitoring, evaluation and enforcement of the State's driver education programs. The Advisory Board should include members from the **principal stakeholders** from all regions of the State.
- Stakeholders →
 - coordination & relationship building

The road continues...



Safer cars. Safer Drivers. Safer roads.

Safer cars. Safer Drivers. Safer roads.

Michelle Atwell

Michelle.Atwell@dot.gov

www.NHTSA.gov

